



Manufacturers of  
LPG, CNG, LNG Components

**CATALOGUE | MAY 2020**





## CONTENTS GUIDE

<b>LPG/CNG/LNG Injectors .....</b>	<b>3</b>
<b>Accessories / Spares.....</b>	<b>7</b>
 <b>LPG Vapour Injection Reducer.....</b>	 <b>10</b>
 <b>Filling Valves</b>	
LPG Fillers .....	14
ACME Fillers .....	18
Dish Fillers .....	22
Spare Parts .....	25
 <b>Underbonnet Kits + Spares .....</b>	 <b>26</b>
<b>Hydrostatic Relief Tee Valves .....</b>	<b>29</b>
<b>Floor Flanges &amp; LPG Tank Cap .....</b>	<b>29</b>
<b>Gas/Petrol Lock Offs.....</b>	<b>31</b>
 <b>LPG/Propane Filters .....</b>	 <b>32</b>
 <b>LNG Products .....</b>	 <b>33</b>

## LPG / CNG / LNG Injectors

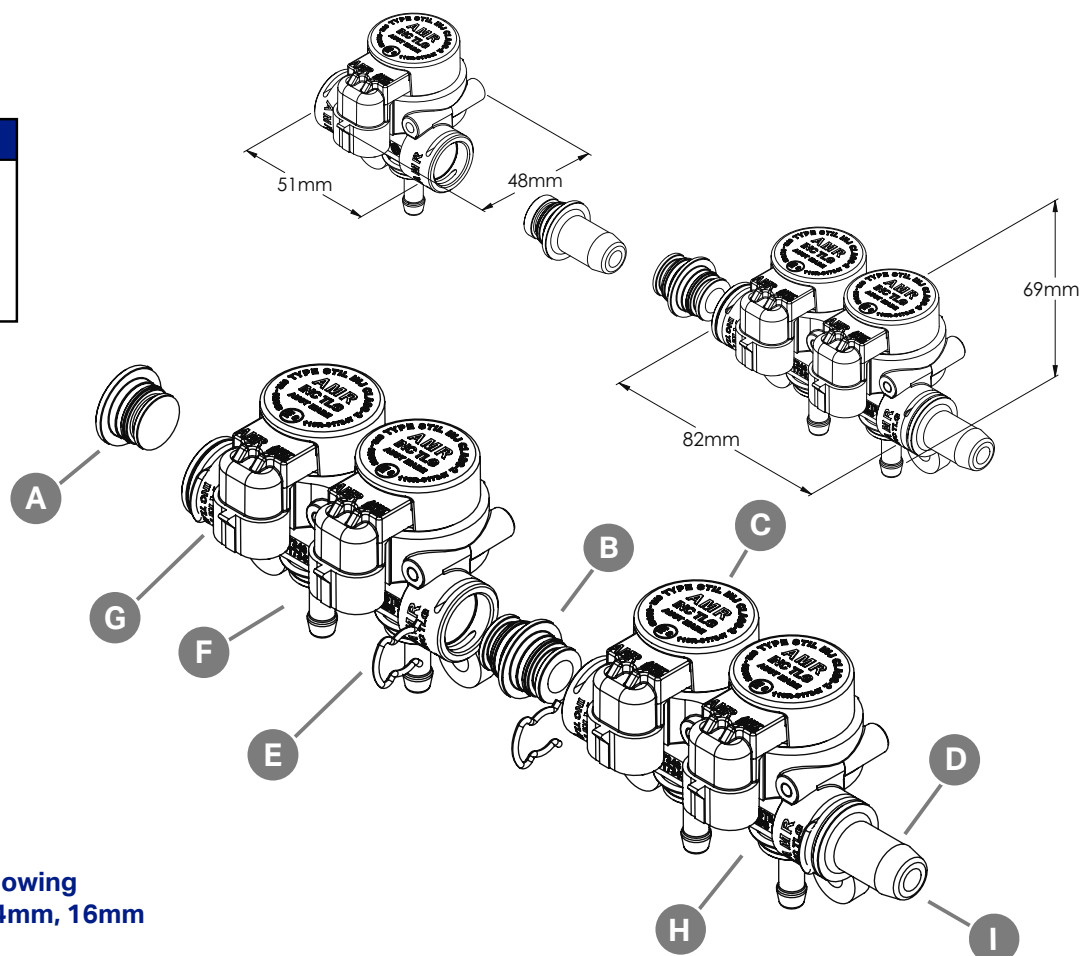


European Approved  
E8 67R-017346  
110R - 017347  
Type STIL INJ Class 2

### FEATURES

Versatile and robust, AMR LPG / CNG injectors are designed for various engine sizes - from small to very large - plus a range of optional accessories. You can add a single or double unit to an existing injector rail by simply replacing the end-plugs with a rail joiner. Besides closing off the rail with end-plugs as required, hose connectors can be fitted instead, making them adaptable for any installation.

SIZE	NOZZLE COLOUR
3.0mm	Black
2.5mm	Green
2.0mm	White
1.5mm	Blue



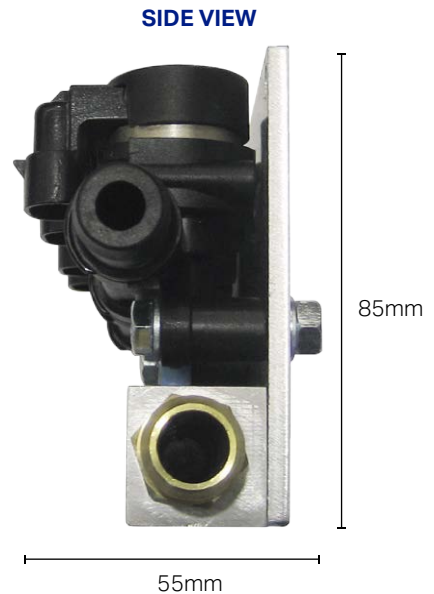
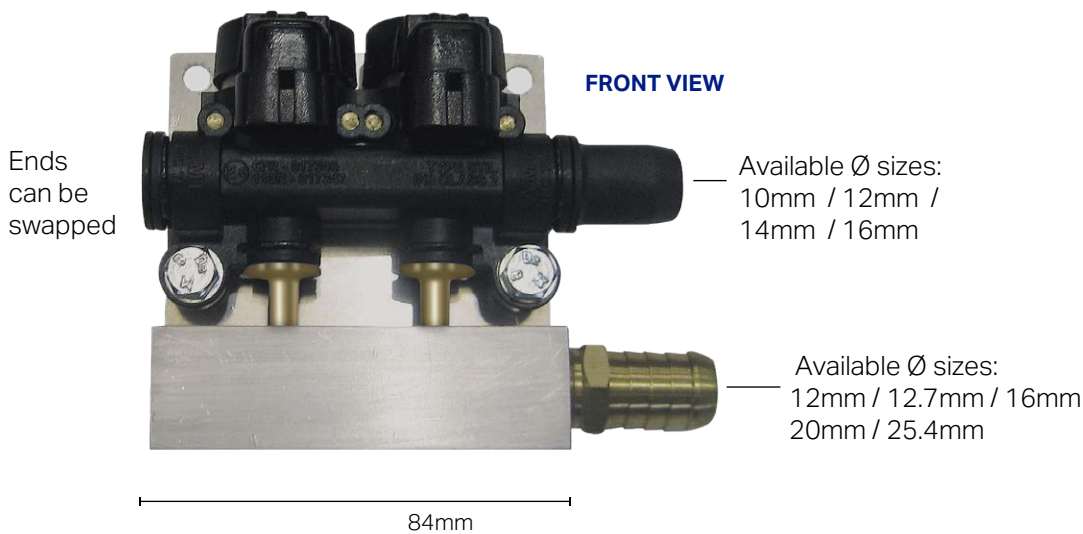


# LPG / CNG / LNG Vapor Injectors

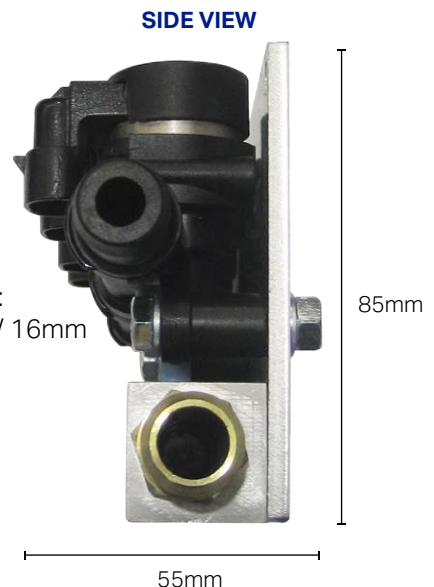
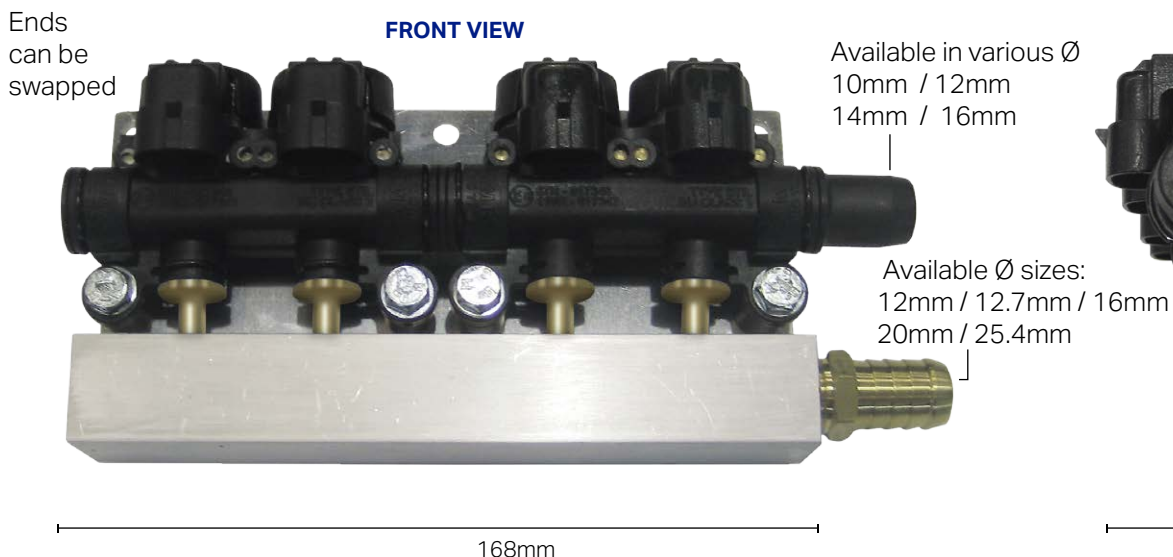
12 Volt and/or 24V version **rail assembly**  
Diesel blend systems and universal applications

European Approved  
E8 67R-017346  
110R - 017347  
Type STIL INJ Class 2

**PART No.**  
**CR-AMRINJR-2UP-12V or CR-AMRINJR-2UP-24V**



**PART No.**  
**CR-AMRINJR-4UP-12V or CR-AMRINJR-4UP-24V**



Pressure and temperature sensor option is also available





TECHNICAL DATA	
Available Models	Single and double modules for any cylinder configuration
Working Pressure	from 0.5 to 3.0 bar   from 7 to 43 psi
Max Working Pressure	3.0 bar   43 psi
Rated Voltage (at coil)	10.8 - 14.4 V
COIL TYPE	A2
Coil Resistance ( $\pm 5\%$ ) at T=25°C	2.0 ohm - 1.5 ohm and 3.0 ohm also available
Suggested Peak Current Time	4.4A
Suggested Holding Current ( $\pm 10\%$ )	2.0A peak and hold
Opening Time Closing Time ( $\pm 10\%$ ) (Total Injection Time 5ms)	2.45ms 1.9ms
Inlet Gas Fitting	Rubber Hose $\varnothing$ - 10mm / 12mm / 14mm / 16mm
Gas Compatibility	LPG, CNG
Temperature Range	-40°C / +120°C

## ACCESSORIES

**HOSE CONNECTOR**  
Ø Available in  
10mm / 12mm /  
14mm / 16mm



**RAIL JOINER**  
Join a single or  
double injector  
together



**END PLUG**  
Plug of any end  
of injector rail  
(O-Rings -  
BS013 on all)



**INJECTOR SOLENOID  
RETAINING CAP**



**INJECTOR RAIL MOUNTS**  
Anti-Vibration, M6 Thread



**REPLACEMENT INJECTOR  
SEATS, O-RINGS, SPRINGS**



**FLOW  
NOZZLES**  
(BS011  
O-Rings)



**INJECTOR  
GAS PRESSURE  
AND HEAT  
SENSOR  
FITTING**  
(BS013  
O-Ring)



## PART NUMBER:



### CR-AMR INJ 1UP

Single 1

Coil resistance available: 1,5 2.3, 3.0 Ohm

Feed tubes diameter available: 10mm, 12mm, 14mm & 16mm



### CR-AMR INJ 2UP

Double 2 together 1x2up



### CR-AMR INJ 3UP

Triple 3 together 1x2up + 1up



### CR-AMR INJ 3UP

Quad 4 together 2 + 2up

Note: 1up can be joined to a 2up, 2up can be joined to another 2up available with pressure/temperature sensor

## LPG / CNG / LNG VAPOUR INJECTORS and diesel blend applications



### CR-AMRINJR-2UP-12V

Universal applications | 2up 12 VOLT

Feed tube sizes 10,12,14 or 16mm ø

84mm (W) x 55mm (D) x 86mm (H)



### CR-AMRINJR-4UP-12V

Universal applications | 4up 12 VOLT

Feed tube sizes 10,12,14 or 16mm ø

168mm (W) x 56mm (D) x 86mm (H)



### CR-AMRINJR-2UP-24V

Universal applications | 2up 24 VOLT

Feed tube sizes 10,12,14 or 16mm ø

84mm (W) x 55mm (D) x 86mm (H)



### CR-AMRINJR-4UP-24V

Universal applications | 4up 24 VOLT

Feed tube sizes 10,12,14 or 16mm ø

168mm (W) x 56mm (D) x 86mm (H)

Pressure and temperature sensor option is also available (CR-AMR INJ TEMSEN)



PART NUMBER:

## ACCESSORIES / SPARES



### CR-AMR INJ CAP

Top cap of injectors



### CR-AMR INJ SEAT

Replacement injector seat with O'ring set  
1x injector seat, 1x seat O'ring, 1x spring, 1x spool-housing O'ring



### CR-AMR INJ SPRING

Replacement injector seat spring



### CR-AMR INJ MOUNT

Injector rubber/stud mounts 1x vibration protection M6 thread at each end  
comes with 2x M6 washers, 2x M6 nuts (Note: rubber is firm)



### CR-AMR INJ DOWN PIN

Brass pins that hold injection into housing



### CR-AMR INJ TEMSEN

AMR Injectors pressure/temperature sensor



## PART NUMBER:



### CR-AMR INJ FEED

10mm, 12mm, 14mm or 16mm feed tube into injector  
Comes with O'ring



### CR-AMR INJ PLUG

Plug to block end of injector  
Comes with O'ring



### CR-AMR INJ JOINER

Joiner to join injectors together  
Comes with O'rings



### CR-AMR INJ ENDCLK

Plug clip for joiner feed tube



### CR-AMR INJ NIPCLIP

Nozzle clip for injector nipple



### 11X2

Viton O'ring for AMR injectors plug,  
feed tube, joiner



### LP-BS011

Viton O'ring for AMR injector nipples



### LP-BS019

Viton O'ring for AMR injection housing  
inside plastic rail

**PART NUMBER:**



**CR-AMR INJ NIPPLE BLU**

1.5mm hole, blue injector nipple  
Suits 6mm I.D. hose  
comes with O'ring



**CR-AMR INJ NIPPLE WHT**

2.0mm hole, white injector nipple  
Suits 6mm I.D. hose  
comes with O'ring



**CR-AMR INJ NIPPLE GRN**

2.5mm hole, green injector nipple  
Suits 6mm I.D. hose  
comes with O'ring



**CR-AMR INJ NIPPLE BK**

3.0mm hole, black injector nipple  
Suits 6mm I.D. hose  
Comes with O'ring



**CR-AMR INJ NIPPLE ORG**

3.25mm hole, red injector nipple  
Suits 6mm I.D. hose  
comes with O'ring

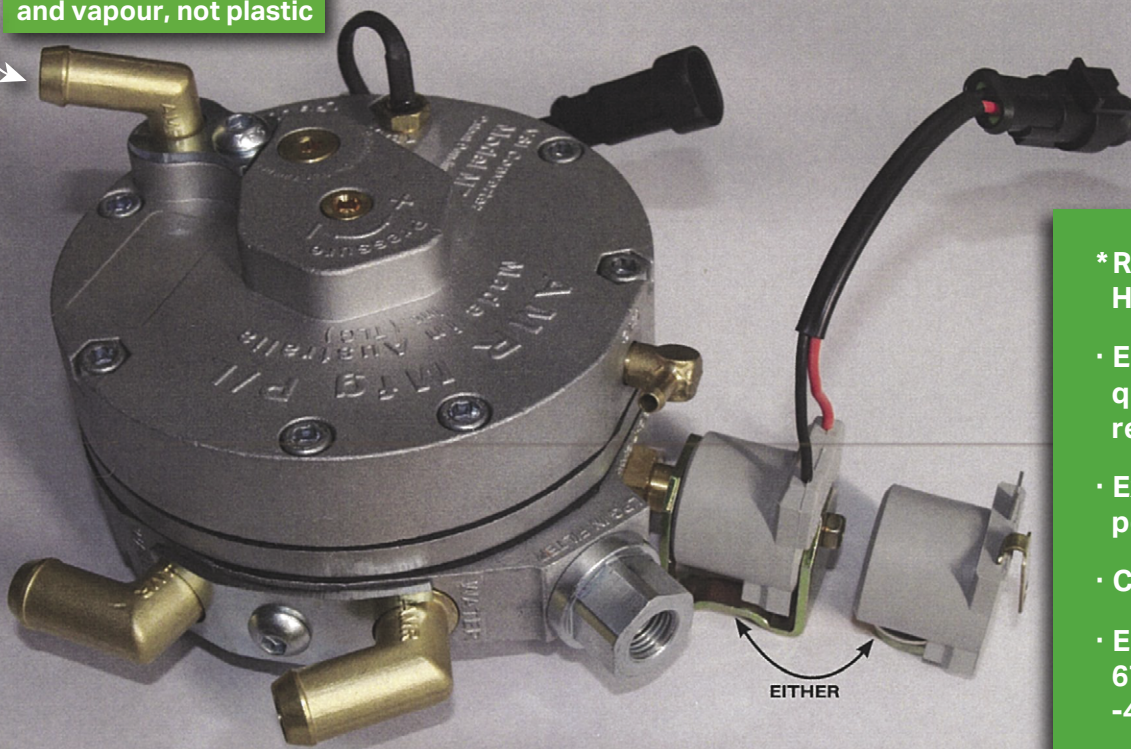


**CR-AMR INJ NIPPLE RED**

3.5mm hole, orange injector nipple  
Suits 6mm I.D. hose  
comes with O'ring

# Vapour Injection Reducer/Regulator FOR LPG & LNG

Brass elbows for water and vapour, not plastic



\* Rated to 455 Kilowatt / 620 Horsepower

• Engineering designed high quality components for reliability and endurance

• Extremely compact and powerful

• Competitively priced

• European approved  
67R-017409  
-40° to +120°

**INCORPORATES GAS LOCK OFF AND FILTER (FOR EASY REPLACEMENT)**

## FEATURES — MODEL M7

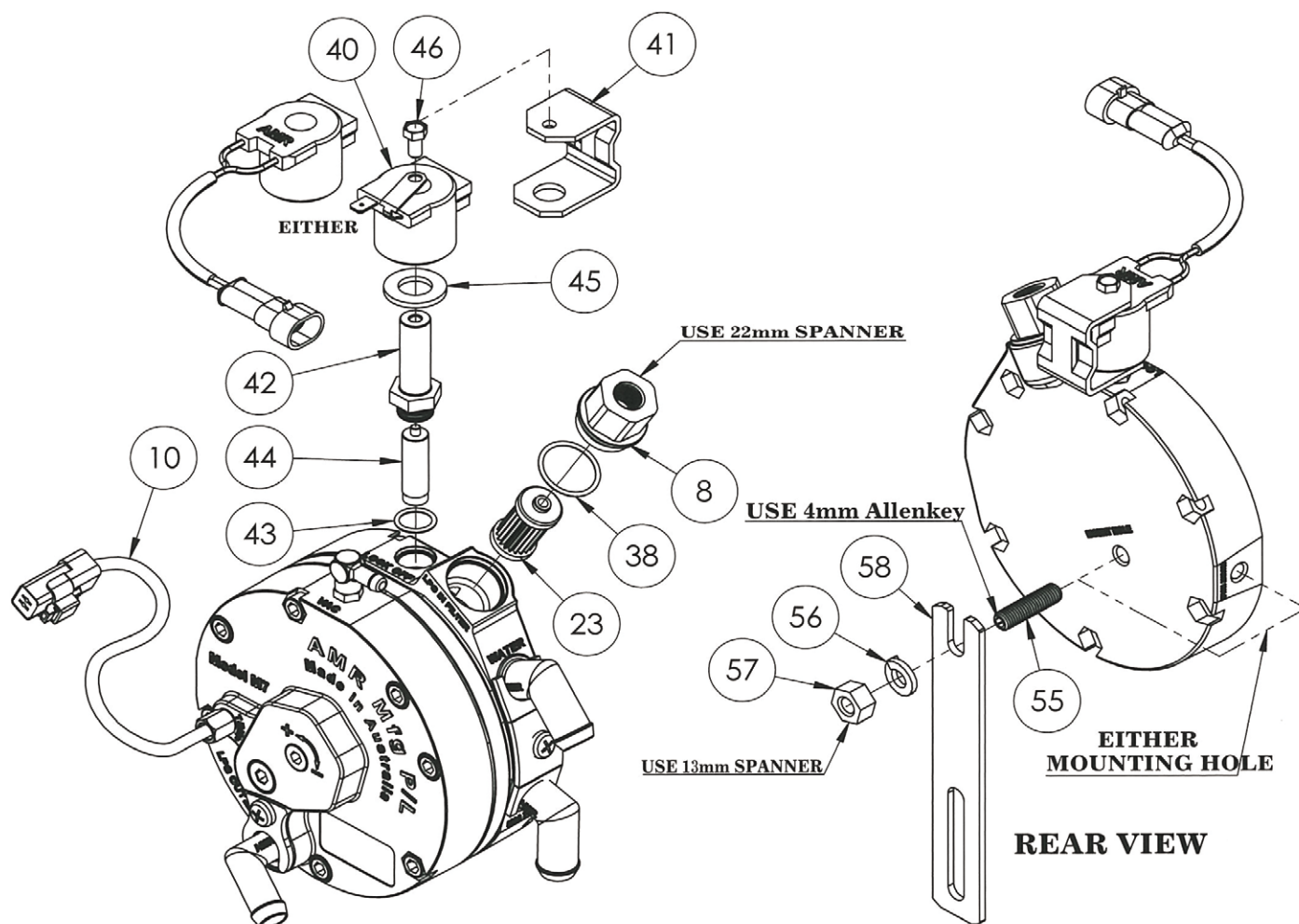
- LOCK OFF SOLENOIDS 12V D.C. & 24 D.C. ARE AVAILABLE WITH MALE TERMINAL OR FEMALE PLUG/LOOM (FOR EASY REPLACEMENT)
- HAS SIDE AND BACK MOUNT HOLES M8 THREAD
- COMES WITH MOUNT BRACKET, STUD, WASHER & NUT
- INCORPORATES TEMPERATURE SENSOR WITH PLUG LOOM VARIOUS PLUGS AND OHMS ALSO AVAILABLE
- ADJUSTABLE WORKING PRESSURE RANGE 1 — 2.7 BAR. COMES SET TO 1.5 BAR.
- MAX INLET PRESSURE 2.55MPA
- ENGINE POWER FROM 50KW TO 455 KW / 620 HP
- OPERATING TEMPERATURE RANGE - 40°C TO + 120°C
- GAS INLET THREAD 1/4 NPT
- BRASS WATER ELBOWS TO SUIT 5/8 16MM I.D HOSE 360° ROTATION + 10MM STRAIGHT
- BRASS ELBOW GAS OUTLET VAPOUR TO SUIT 12MM I.D & 16MM I.D HOSE 360° ROTATION + 11MM, 12MM & 14MM IN STRAIGHT
- BRASS STRAIGHT VACUUM FITTING TO SUIT 6MM I.D HOSE
- ASSEMBLED WEIGHT 2.3KG
- CONVERTER SIZE: 135MM DIAMETER AND 74MM THICK

**AUSTRALIAN MADE - THE STRENGTH OF QUALITY**



# VAPOUR SEQUENTIAL INJECTION LPG CONVERTER

## INCORPORATES GAS LOCK OFF AND FILTER DISPLAY



INDEX No.	DESCRIPTION	PART No.
10	TEMP SENSOR	VICTS 5177
23	FILTER	L-CL20RK
38	FILTER CAP O RING	BS 019 VITON
8	INLET FITTING TIGHTEN TO 10NM	VIIL 5D3
43	O RING - NITRILE	BS 014 VITON
44	PLUNGER	GL300500
42	VALVE STEM TIGHTEN TO 10NM	GL300300
45	COIL WASHER	GHL20CW
40	SOLENOID ASSEMBLY	L-GL300100
40A	SOLENOID WITH LOOM	LP-GLV3453
46	M5 x 10 SET SCREW	M5105
41	SOLENOID BRACKET	GL30LPUB
57	M8 NUT	
56	M8 SPRING WASHER	
58	CONVERTER BRACKET	VCB5337
55	M8 x 30 STUD	

### WARNING:

*Improper installation or use of this LPG product may cause serious injury and/or property damage.*

### INSTALLERS:

*The installation of this product should be carried out by an Accredited Installer of your state within Australia; in accordance with AS/NZS 1425:2013 or to the regulations and bodies of other countries.*

DISTRIBUTED BY:

*In the interest of continuous improvement, AMR Manufacturing PTY. LTD. reserves the right to change the specifications or design of any of its products without prior notice.*



LPG, CNG & LNG Auto Gas Components

33 Downing St, Oakleigh VIC 3166 Australia

Tel. +61 3 9563 1508

sales@amrautogas.com.au | www.amrautogas.com.au



# Replacement Chart

## AMR Vapour Sequential Injection LPG Converter Model M7



BRAND	ELBOW SIZE (LPG outlet)	PLUG (Gas lock-off)	PLUG (Temperature sensor)
Airod	14mm	Terminal	AMP 2-pin
BRC	12mm	Terminal	AMP (Tyco) 3-pin Gen-24, 2-pin AMP 2-pin female
Dymco	12mm	Terminal	AMP 2-pin
e-Gas (eg. RG10)	12mm	AMP 2-pin female (Reverse polarity)	Gen-24, 2-pin (Thermistor 3.5Ω) (or re-use existing temp sensor)
Emer	12 or 16mm	AMP 2-pin female	AMP 2-pin female
Emmegas	16mm	Terminal	AMP 2-pin
King	12mm	Terminal	AMP 2-pin
KME Elko	12mm	AMP 2-pin female	AMP 2-pin
Landi Renzo Rectangular conv. (older) > 1.2 Bar* (4 Cyl) > 1.5 Bar (6 & 8 Cyl) Small round conv.	12mm (16mm less common) 14mm	Gen-24, 2-pin	AMP 2-pin AMP 2-pin female
Lovato	12mm	AMP 2-pin female	AMP 2-pin
OMVL dream > 1.4 Bar* (4 Cyl & Fords) > 1.8 Bar (6 & 8 Cyl)	12mm	AMP 2-pin female	AMP 2-pin
Prins	16mm	Terminal	Bosch 2-pin
Romano	12mm	Terminal	AMP 2-pin
Stag	12mm	Terminal	AMP 2-pin female
Stargas	14mm	Terminal	AMP 2-pin
Tartarini	12 or 16mm	AMP 2-pin female	AMP 2-pin
Xion	12mm	Terminal	AMP 2-pin

\*Note: M7 comes with factory preset pressure of 1.5 Bar

## PART NUMBER:



### C-M7

M7 up to up 455kW/620HP LPG Vapour Injection Reducer incorporates gas lock off, LPG filter, and temperature sensor, 1/4 NPT inlet thread, available with 10, 12, 14 & 16mm vapour outlets in brass and a range of plug options for gas lock-off solenoid and temp sensor, solenoid is also available in 12V or 24V. \*European approval to -40° to +120° E8 67R-017409



### C-M7TS

Replacement injector seat with O'ring set  
1x injector seat, 1x seat O'ring, 1x spring, 1x spool-housing O'ring



### LG-GL20RK

M7 replacement lock-off 12V solenoid with terminals  
24V is also available



### CR-M7RK

M7 vapour injection repair kit comes with filter & lever assembly



### LP-GLV3453

M7 replacement lock-off 12V solenoid with AMP plug



### LP-GL300100

M7 replacement lock-off 12V solenoid with terminals  
24V is also available



### LP-GL300300

M7 lock-off brass stem



### LP-GL300500

M7 lock-off plunger that operates inside brass stem



### LP-BS014

M7 reducer Viton O'rings  
for water and vapour elbows



# MANUFACTURERS LPG Filling Valves

European Approved  
67R-0110318  
Class 3 - 40°to+120°

## UNIVERSAL PANEL FILLERS



AMR panel fillers can have either 30mm and/or 50mm ventilation hose connect straight on the back of the filler

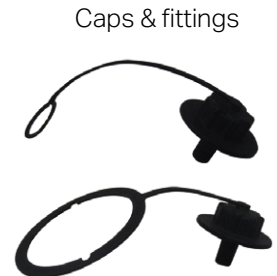
## EURO FILLERS

## REPLACEMENT PARTS



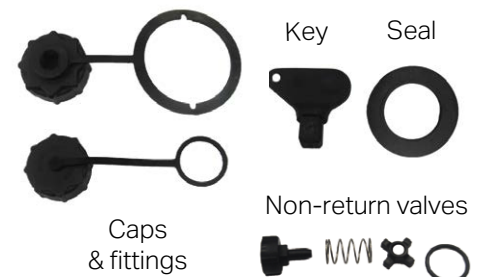
## DISH FILLERS

## REPLACEMENT PARTS



## ACME FILLERS

## REPLACEMENT PARTS



## EURO, DISH & ACME FITTINGS AND CONNECTORS

5/8 FLR #6



5/8 FLR #6 Elbow



3/4 FLR #8



3/4 FLR #8 Elbow



8mm Copper Straight  
Comes with ferrel & nut



8mm Copper Elbow  
Comes with ferrel & nut



PART NUMBER:

## LPG FILLERS

### LPG FILLING VALVES EUROPEAN APPROVAL TO -40°C E8 67R-0110318 CLASS 3

#### RF20BK-E3¾



Euro 3 LPG panel filler (BLACK) comes complete with:  
 housings, cap-n-strap assembly, nut, washer.  
 It can be installed on any panel, bumper bar or flat surface by drilling a 70mm-diameter hole (subject to each country's governing legislation)

- Suits 50mm vent hose connection direct on back
- Single non-return valve
- ¾ rear flare connection fitting #8

#### RF20BK-E3



Euro 3 LPG panel filler (BLACK) comes complete with:  
 housings, cap-n-strap assembly, nut, washer.  
 It can be installed on any panel, bumper bar or flat surface by drilling a 70mm-diameter hole (subject to each country's governing legislation)

- Suits 50mm vent hose connection
- Single non-return valve
- 5/8 rear flare fitting #6

#### RF20BK-E3RA¾



Euro 3 LPG panel filler (BLACK) comes complete with:  
 housings, cap-n-strap assembly, nut, washer.  
 It can be installed on any panel, bumper bar or flat surface by drilling a 70mm-diameter hole (subject to each country's governing legislation)

- Suits 50mm vent hose connection
- Single non-return valve
- ¾ rear flare connection fitting #8
- Elbow can be turned in any direction

#### RF20BK-E3RA



Euro 3 LPG panel filler (BLACK) comes complete with:  
 housings, cap-n-strap assembly, nut, washer.  
 It can be installed on any panel, bumper bar or flat surface by drilling a 70mm-diameter hole (subject to each country's governing legislation)

- Suits 50mm vent hose connection
- Single non-return valve
- 5/8 rear flare fitting #6
- Elbow can be turned in any direction

#### RF2007-E3¾



Euro 3 filler with cap, strap, 2 x nuts, 2 x washers,

- single non-return valve
- ¾ rear flare fitting #8

## PART NUMBER:



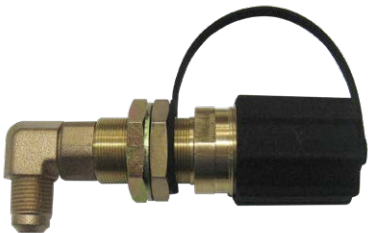
### RF2007-E3

Euro 3 filler with cap, strap, 2 x nuts, 2 x washers,  
single non-return valve  
— 5/8 rear flare fitting #6



### RF2007-E3-RA3/4

Euro 3 filler with cap, strap, 2 x nuts, 2 x washers,  
single non-return valve.  
— 3/4 rear flare fitting #8  
— Elbow can be turned in any direction



### RF2007-E3-RA

Euro 3 filler with cap, strap, 2 x nuts, 2 x washers,  
single non-return valve.  
— 5/8 rear flare fitting #6  
— Elbow can be turned in any direction



### RF2007-E3-3/4PV

Euro 3 filler with cap, strap, 2 x nuts, 2 x washers,  
single non-return valve and mount bracket  
— 3/4 rear flare fitting #8



### RF2007-E3-PV

Euro 3 filler with cap, strap, 2 x nuts, 2 x washers,  
single non-return valve and mount bracket  
— 5/8 rear flare fitting #6



### RF2007-E3<sup>3/4</sup>-RAPV

Euro 3 filler with cap, strap, 2 x nuts, 2 x washers,  
single non-return valve with mount bracket  
— 3/4 rear flare fitting #8  
— Elbow can be turned any direction



## PART NUMBER:



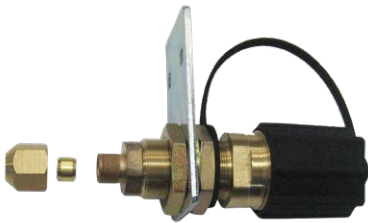
### RF2007-E3-RAPV

Euro 3 filler with cap, strap, 2 x nuts, 2 x washers, single non-return valve with mount bracket  
 – 5/8 rear flare fitting #6  
 – Elbow can be turned any direction



### RF2007-E3-8mmC

Euro 3 filler with cap, strap, 2 x nuts, 2 x washers, single non-return valve.  
 Suit 8mm Copper



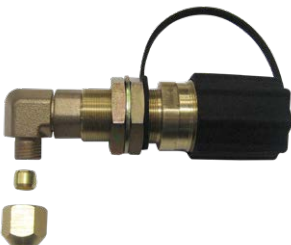
### RF2007-E3-8mmCPV

Euro 3 filler with cap, strap, 2 x nuts, 2 x washers, single non-return valve with mount bracket.  
 – Suits 8mm Copper



### RF2007-E3-8mmCRAPV

Euro 3 filler with cap, strap, 2 x nuts, 2 x washers, single non-return valve.  
 – Suits 8mm Copper



### RF2007-E38mmCRA

Euro 3 filler with cap, strap, 2 x nuts, 2 x washers, single non-return valve  
 – Suits 8mm copper  
 – Elbow can be turned in any direction

PART NUMBER:

## ACME FILLERS

### RF20BK



ACME LPG panel filler (BLACK) comes complete with: housings, cap-n-strap assembly, nut, washer, square key. It can be installed on any panel, bumper bar or flat surface by drilling a 65mm-diameter hole (subject to each country's governing legislation)

- Suits 50mm vent hose connection
- Single non-return valve
- 5/8 rear flare connection fitting #6

### RF20BK<sup>3/4</sup>



ACME LPG panel filler (BLACK) comes complete with: housings, cap-n-strap assembly, nut, washer, square key. It can be installed on any panel, bumper bar or flat surface by drilling a 65mm-diameter hole (subject to each country's governing legislation)

- Suits 50mm vent hose connection
- Single non-return valve
- 3/4 rear flare connection fitting #8

### RF20BK-RA5/8



ACME LPG panel filler (BLACK) comes complete with: housings, cap-n-strap assembly, nut, washer, square key. It can be installed on any panel, bumper bar or flat surface by drilling a 65mm-diameter hole (subject to each country's governing legislation)

- Suits 50mm vent hose connection on to back
- Single non-return valve
- 5/8 rear flare connection fitting #6
- Elbow can be moved to any direction

### RF20BK-RA<sup>3/4</sup>



ACME LPG panel filler (BLACK) comes complete with: housings, cap-n-strap assembly, nut, washer, square key. It can be installed on any panel, bumper bar or flat surface by drilling a 65mm-diameter hole (subject to each country's governing legislation)

- Suits 50mm vent hose connection on to back
- Single non-return valve
- 3/4 rear flare connection fitting #8
- Elbow can be moved to any direction

## PART NUMBER:

### RF20BK-8mmC



ACME LPG panel filler (BLACK) comes complete with: housings, cap-n-strap assembly, nut, washer, square key. It can be installed on any panel, bumper bar or flat surface by drilling a 65mm-diameter hole (subject to each country's governing legislation)

- Suits 50mm vent hose connection on to back
- Single non-return valve
- Suits 8mm copper

### RF20BK-RA8mmC



ACME LPG panel filler (BLACK) comes complete with: housings, cap-n-strap assembly, nut, washer, square key. It can be installed on any panel, bumper bar or flat surface by drilling a 65mm-diameter hole (subject to each country's governing legislation)

- Suits 50mm vent hose connection on to back
- Single non-return valve
- Suits 8mm copper
- Elbow can be turned to any direction

1-39 units @ AUD42  
40+ units @ AUD39

### RF2007



ACME filler with cap, strap, 2 x nuts, 2 x washers, single non-return valve

- 5/8 rear flare connection fitting #6 (other fittings available as required for different countries)

### RF2007<sup>3/4</sup>



ACME filler with cap, strap, 2 x nuts, 2 x washers, single non-return valve

- 3/4 rear flare connection fitting #8 (other fittings available as required for different countries)

1-19 units @ AUD31  
20-49 units @ AUD28

### RF27-PVAN



ACME filler with cap, strap.

- 5/8 flare fitting #6
- Connection with 90-degree welded bracket

### RF2007-RA



ACME Filler with cap, strap, 2 x nuts, 2 x washer, single non-return valve

- 5/8 rear flare fitting #6
- Elbow can be turned in any direction

## PART NUMBER:



### RF2007-RAPV

ACME Filler with cap, strap, 2 x nuts, 2 x washer, single non-return valve with mount bracket  
 – Elbow can be turned in any direction  
 – 5/8 rear flare fitting #6

1-39 units @ AUD42  
 40+ units @ AUD39



### RF2007-3/4 RA

ACME filler with cap, strap, 2 x nuts, 2 x washer, single non-return valve  
 – 3/4 rear flare fitting #8  
 – Elbow can be turned in any direction



### RF2007-3/4 RAPV

ACME filler with cap, strap, 2 x nuts, 2 x washer, single non-return valve with mount bracket  
 – 3/4 rear flare fitting #8  
 – Elbow can be turned in any direction

1-39 units @ AUD42  
 40+ units @ AUD39



### RF2007-8mmC

ACME filler with cap, strap, 2 x nuts, 2 x washer, single non-return valve  
 – Suit 8mm copper



### RF2007-8mmCPV

ACME filler with cap, strap, 2 x nuts, 2 x washer, single non-return valve with mount bracket  
 – Suit 8mm copper



### RF2007-8mmCRA

ACME filler with cap, strap, 2 x nuts, 2 x washer, single non-return valve RA  
 – Suit 8mm copper



## PART NUMBER:



### RF2007-8mmCRAPV

ACME filler with cap, strap, 2 x nuts, 2 x washer, single non-return valve with mount bracket  
— Suit 8mm copper



### RF20WH

ACME LPG panel filler (WHITE) comes complete with: housings, cap-n-strap assembly, nut, washer, square key. It can be installed on any panel, bumper bar or flat surface by drilling a 65mm-diameter hole (subject to each country's governing legislation)  
— Suits 50mm vent hose connection  
— Single non return valve  
— 5/8 rear flare connection fitting #6



### RF20WH<sup>3/4</sup>

ACME LPG panel filler (WHITE) comes complete with: housings, cap-n-strap assembly, nut, washer, square key. It can be installed on any panel, bumper bar or flat surface by drilling a 65mm-diameter hole (subject to each country's governing legislation)  
— Suits 50mm vent hose connection  
— Single non return valve  
— 3/4 rear flare connection fitting #8



### RF27<sup>3/4</sup>

ACME filler with cap, strap, twin check valve  
3/4 male thread with Loctite Blue Threadlocker



### RF27-FL

ACME filler with cap, strap, twin check valve  
3/8 male thread with Loctite Blue Threadlocker

PART NUMBER:

## DISH FILLERS

### RF20BK-D8mmC



Dish LPG panel filler (BLACK) comes complete with: housings, cap-n-strap assembly, nut, washer.  
It can be installed on any panel, bumper bar or flat surface by drilling a 70mm-diameter hole (subject to each country's governing legislation)  
— Suits 30mm vent hose connection over nut and/or 50mm vent hose as per photos

### RF20BK-D8mmCRA



Dish LPG panel filler (BLACK) comes complete with: housings, cap-n-strap assembly, nut, washer.  
It can be installed on any panel, bumper bar or flat surface by drilling a 70mm-diameter hole (subject to each country's governing legislation)  
— Suits 50mm vent hose connection  
— Single non-return valve  
— Elbow can be turned in any direction

### RF20BK-D $\frac{3}{4}$



Dish LPG panel filler (BLACK) comes complete with: housings, cap-n-strap assembly, nut, washer.  
It can be installed on any panel, bumper bar or flat surface by drilling a 70mm-diameter hole (subject to each country's governing legislation)  
— Suits 50mm and 30mm vent hose  
— Single non-return valve  
— 3/4 rear flare connection fitting #8

### RF20BK-D $\frac{3}{4}$ RA



Dish LPG panel filler (BLACK) comes complete with: housings, cap-n-strap assembly, nut, washer.  
It can be installed on any panel, bumper bar or flat surface by drilling a 70mm-diameter hole (subject to each country's governing legislation)  
— Suits 50mm vent hose  
— Single non-return valve  
— 3/4 rear flare connection fitting #8  
— Elbow can be turned in any direction

### RF20BK-D



Dish LPG panel filler (BLACK) comes complete with: housings, cap-n-strap assembly, nut, washer.  
It can be installed on any panel, bumper bar or flat surface by drilling a 70mm-diameter hole (subject to each country's governing legislation)  
— Suits 50mm and 30mm vent hose  
— Single non-return valve  
— 5/8 rear flare connection fitting #6

## PART NUMBER:

### RF20BK-D5/8RA



Dish LPG panel filler (BLACK) comes complete with: housings, cap-n-strap assembly, nut, washer.  
It can be installed on any panel, bumper bar or flat surface by drilling a 70mm-diameter hole (subject to each country's governing legislation)

- Suits 50mm vent hose
- Single non-return valve
- 5/8 rear flare connection fitting #6
- Elbow can be turned in any direction

### RF2007-D8mmC



Dish filler with cap, strap, 2 x nuts, 2 x washers, single non-return valve

- Suits 8mm copper

### RF2007-D8mmCRA



Dish filler with cap, strap, 2 x nuts, 2 x washers, single non-return valve

- Suits 8mm copper
- Elbow can be turned in any direction

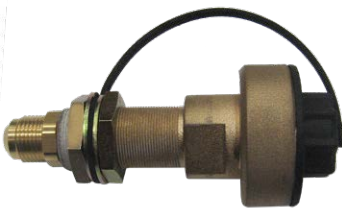
### RF2007-D



Dish filler with cap, strap, 2 x nuts, 2 x washers, single non-return valve

- 5/8 rear flare connection fitting #6

### RF2007-D $\frac{3}{4}$



Dish filler with cap, strap, 2 x nuts, 2 x washers, single non-return valve

- 3/4 rear flare connection fitting #8

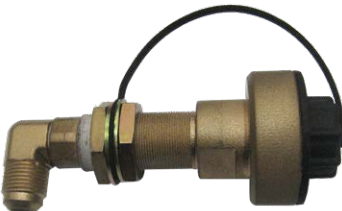
### RF2007-DRA



Dish filler with cap, strap, 2 x nuts, 2 x washers, single non-return valve

- 3/4 rear flare connection fitting #8
- Elbow can be turned in any direction

### RF2007-D $\frac{3}{4}$ RA



Dish filler with cap, strap, 2 x nuts, 2 x washers, single non-return valve

- 3/4 rear flare connection fitting #8
- Elbow can be turned in any direction

## PART NUMBER:



### RF2007-D8mmCPV

Dish filler with cap, strap, 2 x nuts, 2 x washers,  
single non-return valve with mount bracket  
— Suits 8mm copper



### RF2007-D8mmCRAPV

Dish filler with cap, strap, 2 x nuts, 2 x washers,  
single non-return valve with mount bracket  
— Suits 8mm copper  
— Elbow can be turned in any direction



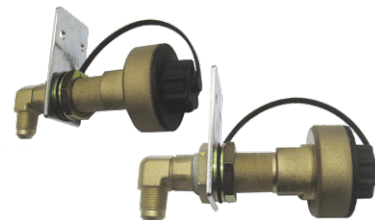
### RF2007-DPV

Dish filler with cap, strap, 2 x nuts, 2 x washers,  
single non-return valve with mount bracket  
— 5/8 rear flare fitting #6



### RF2007-D $\frac{3}{4}$ PV

Dish filler with cap, strap, 2 x nuts, 2 x washers,  
single non-return valve with mount bracket  
— 3/4 rear flare fitting #8



### RF2007-DRAPV

Dish filler with cap, strap, 2 x nuts, 2 x washers,  
single non-return valve with mount bracket  
— 5/8 rear flare fitting #6  
— Elbow can be turned in any direction



### RF2007-D $\frac{3}{4}$ RAPV

Dish filler with cap, strap, 2 x nuts, 2 x washers,  
single non-return valve with mount bracket  
— 5/8 rear flare fitting #6  
— Elbow can be turned in any direction  
— 3/4 rear flare connection fitting #8



PART NUMBER:

## SPARE PARTS



**RF20-E3PRCR**

Euro 3 panel filler replacement cap and retainer  
70mm Ring



**RF20-E3RCS**

Euro 3 universal filler replacement cap and retainer  
26mm Ring



**RF20-DRCS**

Dish panel filler replacement cap and retainer  
70mm Ring



**RF20-DUV**

Dish universal filler replacement cap and retainer  
26mm Ring



**RF20-305LBK**

ACME panel filler replacement cap and strap



**RF20-305MLP**

ACME cap with stretch strap  
(Strap will stretch over any ACME fill head)



**RF20-3LPC**

ACME cap with chain and ring (ring I.D. is 28mm)  
Available with black or yellow cap



**RF20-RK**

RF20 panel fillers replacement, non-return valve kit



**RF20-4**

ACME panel filler cap tightening key



**RF20-7007**

AMR LPG filler, front seal

## PART NUMBER:



### UB-AMRLGP-4S

The LPG 4 cylinder simple under bonnet kit includes:  
AMR M7 575HP reducer with temp. sensor, 4xAMR injectors, ECU, harness, MAP sensor, gauge/change-over switch.  
\*5 cylinder simple kits also available



### UB-AMRLGP-6S

The LPG 6 cylinder simple under bonnet kit includes:  
AMR M7 575HP reducer with temp. sensor, 6xAMR injectors, ECU, harness, MAP sensor, gauge/change-over switch



### UB-AMRLGP-8S

The LPG 8 cylinder simple under bonnet kit includes:  
AMR M7 575HP reducer with temp. sensor, 8xAMR injectors, ECU, harness, MAP sensor, gauge/change-over switch



### UB-AMRLGP-4CO

The LPG 4 cylinder complete under bonnet kit includes:  
AMR M7 575HP reducer with temp. sensor, 4xAMR injectors, ECU, harness, MAP sensor, gauge/change-over switch, gas & water hoses, clamps, manifold nipples, water tees, etc.



### UB-AMRLGP-6CO

The LPG 6 cylinder complete under bonnet kit includes:  
AMR M7 575HP reducer with temp. sensor, 6xAMR injectors, ECU, harness, MAP sensor, gauge/change-over switch, gas & water hoses, clamps, manifold nipples, water tees, etc.



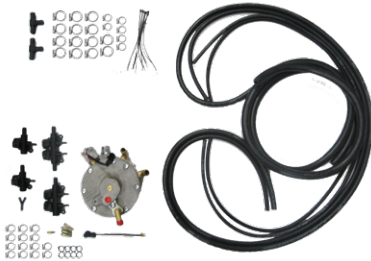
### UB-AMRLGP-8CO

The LPG 8 cylinder complete under bonnet kit includes:  
AMR M7 575HP reducer with temp. sensor, 8xAMR injectors, ECU, harness, MAP sensor, gauge/change-over switch, gas & water hoses, clamps, manifold nipples, water tees, etc.  
\*10 cylinder complete kits is also available

PART NUMBER:

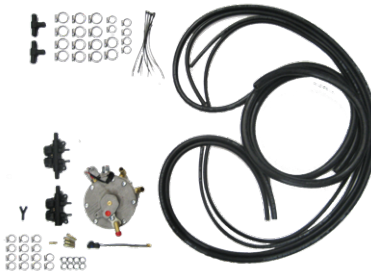
## ELECTRONICS

### UB-AMRLGP-4CO-ELE



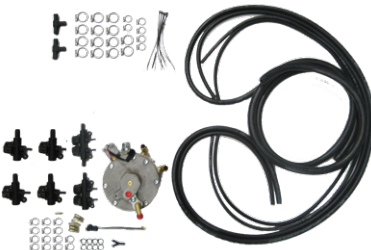
The LPG 4 cylinder complete under bonnet kit — electronics includes: AMR M7 575HP reducer with temp. sensor, 4xAMR injectors, gas & water hoses, clamps, manifold nipples, water tees, etc.

### UB-AMRLGP-6CO-ELE



The LPG 6 cylinder complete under bonnet kit — electronics includes: AMR M7 575HP reducer with temp. sensor, 6xAMR injectors, gas & water hoses, clamps, manifold nipples, water tees, etc.

### UB-AMRLGP-8CO-ELE



The LPG 8 cylinder complete under bonnet kit — electronics includes: AMR M7 575HP reducer with temp. sensor, 8xAMR injectors, gas & water hoses, clamps, manifold nipples, water tees, etc.  
\*10 cylinder complete kits is also available.

PART NUMBER:

## ACCESSORIES / SPARES



**UB-AMR-4CECU**

AMR 4 cylinder ECU



**UB-AMR-4CAAR**

AMR 4 cylinder ECU harness



**UB-AMR-6CECU**

AMR 6 cylinder ECU  
Plastic box version will replace aluminium version



**UB-AMR-6CHAR**

AMR 6 cylinder ECU harness



**UB-AMR-8CECU**

AMR 8 cylinder ECU



**UB-AMR-8CHAR**

AMR 8 cylinder harness



**UB-AMR-MAPS**

AMR vapour injection MAP sensor



**UB-AMR-G/C/OVER**

AMR vapour injection gauge/change-over switch



**UB-AMR-ECUCC**

AMR ECU connection laptop cable

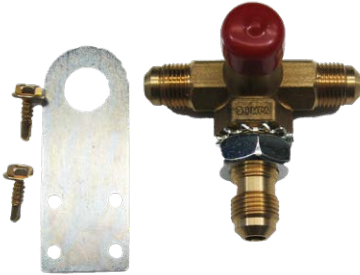


## PART NUMBER:

AMR-HSTV

### HYDROSTATIC TEE VALVES

Designed for two or more LPG cylinders are fitted to a vehicle can be set to release at any pressure (preset to release at 3.1MPa European approval to -40°C to +120°C (Approval No. E8 67R-0110319 class3)



## VENT HOSE FLOOR FLANGES + Y FITTING

FF50

Single-ended floor flange for 50mm vent hose



FF5050

Double-ended floor flange for 50mm vent hose



AV-VT400

50mm Y piece  
Joins 50mm vent hose in a Y configuration  
Diameters: 1 x 50mm + 2 x 40mm



TR-PLUG AMR

LPG tank vent cap (50mm Ø)  
Seals one end of LPG tank compartment box





# AMR HYDROSTATIC RELIEF VALVE "T" CONNECTOR WITH CHECK VALVES

## AUSTRALIAN MADE

- European Certified, Approval No. 67R-0110319 Class 3 - 40°to + 120°
- Easily installed with handy mounting bracket with pre-drilled holes and Tek screws
- Mandatory for all twin tank installations
- Suitable for all vehicles including 4WD, Heavy vehicles
- 36-month warranty
- Can also be mounted through a hole with star washer and nut

### TECHNICAL DETAILS

Working Pressure Max:	3.1 MPA
Burst Pressure Over:	10.2 MPA
Flow Rate:	270 L/H
Valve Seat:	Viton
Main Housing:	Hot Forged Brass
Assembled Weight:	275 GM
In/Out Thread Size:	3/8 SAE Flare

Product may be ordered through your local LPG suppliers

Distributed by:

In the interest of continuous improvement, AMR Manufacturing Pty. Ltd. reserves the right to change the specifications or design of any of its products without prior notice.

For Safety Reasons,  
Do Not Remove The Cap.  
Pressure Discharge Point 3.1 MPA

Part No. HYDRO T 072010/3M

Inlet Tank 2  
3/8 SAE flare

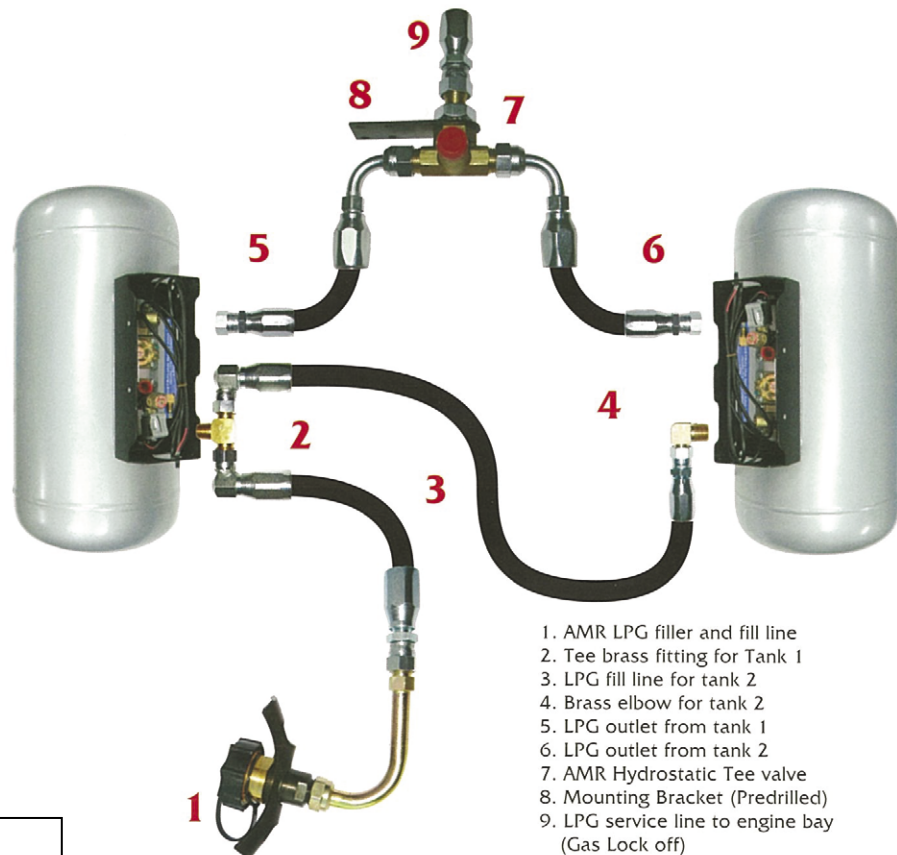
Inlet Tank 1  
3/8 SAE flare

Mounting Bracket  
Predrilled with  
4 x 5.3mm Holes

Star Washer

Maximum torque on  
Jam Nut 70-80NM

Outlet to LPG Gas  
Lockoff 3/8 SAE



1. AMR LPG filler and fill line
2. Tee brass fitting for Tank 1
3. LPG fill line for tank 2
4. Brass elbow for tank 2
5. LPG outlet from tank 1
6. LPG outlet from tank 2
7. AMR Hydrostatic Tee valve
8. Mounting Bracket (Predrilled)
9. LPG service line to engine bay (Gas Lock off)

**WARNING:**  
Improper installation or use of this product may cause serious injury and/or property damage

**INSTALLERS:**  
The installation of this product should be carried out by an Accredited Installer of your state within Australia, in accordance with AS/NZS 1425:2007 or to the regulations and bodies of other countries

**Manufacturers of LPG, CNG & LNG Auto Gas Components**

33 Downing St, Oakleigh VIC 3166 Australia

Tel. +61 3 9563 1508

sales@amrautogas.com.au | www.amrautogas.com.au

## PART NUMBER:



### L-GL20HF

90-degree gas lock-off  
1/8 NPT in/out thread incorporates filter  
solenoid available in 12V or 14V



### LP-GL20RK

L-GL20HF replacement filter  
comes with O'rings



### L-PL40T

Petrol lock-off  
comes with 8mm I.D. hose barb fittings  
equipped with override screw in case of solenoid failure  
solenoid available in 12V or 14V



### L-PL30

Petrol lock off  
1/8 NPT in/out internal thread  
solenoid available in 12V or 14V



### L-PL30-WTANK

Retro-fit tank lock off  
comes with 5/16 swivel nut at tank-valve end,  
1/8 NPT at outlet end, 1200mm loom  
solenoid available in 12V or 14V



### LP-GL300300

Lock-off brass stem



### LP-GL300500

Plunger that operates inside brass stem



### LP-GL300100

Gas and petrol lock-off replacement solenoid

## PART NUMBER:

### AV-LPGF1-##



Inline filter installed after Vapor Injection Reducer  
Specially designed to filter LPGAS (Propane) before it enters the injectors.  
Available in 10, 12, 14 & 16mm inlet and outlet (### denote inlet & twin-outlet diameters)

### AV-LPGF1-###



Inline filter installed after Vapor Injection Reducer  
Specially designed to filter LPGAS (Propane) before it enters the injectors.  
Available in 12, 14 & 16mm inlet and same diameter twin-outlets  
Or 16mm inlet and 12mm twin outlets (### denote inlet & twin-outlet diameters)

### AV-AMRSO



MR Spin-on Filter Suits a range of systems, including BRC, Tartarini, etc.

### AV-BRC (OR VALTEK)



Cartridge filter to Suit BRC or Valtek plastic cartridge.

## SENDERS / GAUGES

### T-550-90



0-90 ohm senders/gauges goes onto tanks and send signal of contents level to gauge (water tight sealing)



## PART NUMBER:



### C-M7LNG1-3

The M7 converter / reducer made for LNG incorporates gas lock-off LPG filter and it is made for LNG diesel blend systems. Bar pressure is 1 to 2.7 bar.  
 –Special 1<sup>st</sup> stage gasket for protection against cold LNG vapour



### C-M7LNG5-9

This M7 converter is made for running trucks on solely LNG. Can go up to 9 bar. Normal running at 5 to 7 bar, incorporates gas lock-off  
 –Special 1<sup>st</sup> stage gasket for protection against cold LNG vapour



### C-LNGHE

LNG Heat exchange unit - stainless steel. This design has proven it's reliability in severe and extreme conditions. It can also supply a large 16 Litre truck engine well with out allowing liquid to go through the converter/regulator. Australian Made.

Total Length: 730mm  
 Top Diameter: 150mm

### C-LNGHEB

LNG Heat exchange mount bracket

Picture  
coming  
soon



**AMR MANUFACTURING**

ACN 060 595 413 | ABN 29 194 097 906

33 Downing Street, Oakleigh VIC 3166, Australia  
Ph. +61 3 9563 1508 • sales@amrautogas.com.au • www.amrautogas.com.au

